



INTRODUCTION

PROLITE AUTOGLO LTD. Is today, a leading manufacturer of Emergency Lights and photoluminescent signages, for over two decades. The company is an ISO 9001 : 2015 Certified Company in this segment in India

The company manufactures signages under the brand name Autoglo®. AUTOGLO signages are manufactured under strict technical supervision to standard specifications and subjected to rigid quality control by technical experts. These signages are in demand for prestigious projects not just in India, but all over the world.

It is universally recommended that safety, identification & fire signs be UV cured and screen printed. Autoglo signages are UV cured and therefore enjoy greater durability as compared to most others. AUTOGLO signs have a life span of 15-20 years indoors.

PRODUCT MATERIAL

AUTOGLO SIGNS are manufactured using the best photoluminescent materials and conform to the latest international standards. We, at AUTOGLO produce our photoluminescent signs using a wide range of materials.

PHOTOLUMINESCENT MATERIALS

Flexyle Sheet (F)

Flexyle is a self-adhesive flexible sheet which can be fixed on any surface which is used for fixing on fire extinguisher or any other round and uneven surface where rigid cannot be used.

Rigid Sheet (R)

A robust and durable self-adhesive sheet which can be fixed on any surface most suitable for indoor signs.

Aluminium (A)

For use where industrial durability and quality is required suitable for both indoor and outdoor use.

CONVENIENCE

All AUTOGLO signs, unlike conventional signs, come with High-grade self-adhesive gumming. They do not require any drilling, screwing or adhesive.

Simply peel off the backing paper and apply.



Three Easy Steps...

HOW TO ORDER

1ST SELECT THE SIGN
FE1 (FIRE EQUIPMENT signs #1)

2ND CHOOSE THE SIZE
200x200 (200x200 millimeter)

3RD CHOOSE THE MATERIAL
F = Flexyle Sheet
R = Rigid Sheet
A = Aluminium

Autoglo® RIGID SHEET
So the selection is FE1 200x200 R

Standards

INTERNATIONAL
DIN 67510 Part 1-4
IMO resolution A 752 (18)
BS ISO 3864-1-2011
ISO 15370
ASTM E 2072-4
NFPA life safety code 101/101B
UL 924
OSHA 1910.37
ISO 7010

INDIAN
IS 9457
IS 12349-1988
IS 13716
IS 1644
NBC 2016 (Part 4)

QUALITY TEST

If you require any further information simply call our Technical Helpline on +91-22-6786 8100/101



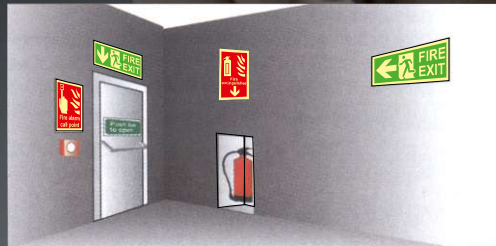
Place an adhesive tape on the sign & peel off within a short time. Autoglo will retain its COLOUR - PRINT where as non Standardized Signs will lose both.

SITING AND SIZING

- It is of great importance that signs are placed so that they can be easily seen.
- Where they cannot be placed next to, or on the item they are identifying, they should be used in conjunction with a directional arrow of the same colour.
- They should be placed as close as possible to the source of light to enable them to absorb the same.
- They must also be regularly checked to ensure they are clean, visible and their meaning is still appropriate.
- Shown below are examples of the use and siting of signs.

ESCAPE ROUTES

It is important to mark exit routes with exit signs at regular intervals and at all junctions leading towards the final point of exit i.e. the doorway - where the sign should be placed above or to the side. If the door itself has any form of security fastening, a sign should be used explaining how to open the door i.e. 'Push bar to open'. Also if there is a fire alarm call point at the exit, it should also be clearly visible.



SITING AND SIZING

SIZE OF SIGNS

When selecting a sign, it is important to select the correct size that is appropriate to the location and its surroundings. Please consider the following guidance notes :-

- The maximum distance the sign is to be viewed from.
- Will the sign stand out from its surroundings.
- Does it need to be viewed from a wide angle.
- Is it in a well lit area.
- Will the message the sign is conveying, only be read in an emergency situation, i.e. 'Fire Exit', 'Fire Extinguisher'.

